



Notification Number: 202007

Area: Service

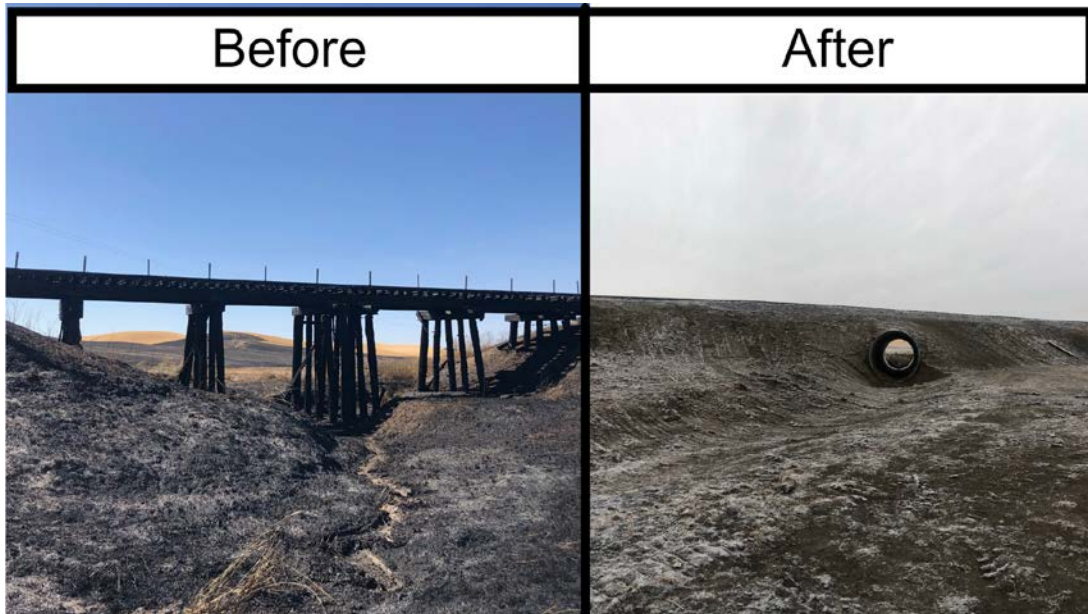
Release Date: October 24, 2020

Re: Cancellation of SSP Embargo of Select Stations

On September 4, 2020, due to a burned down bridge, SSP Railway issued AAR embargo #SSP000120, suspending all traffic to and from all stations south of the bridge at Milepost 52.3. The bridge has been replaced with a culvert. Operations and ability to route cars to/from these stations resumes immediately.

SSP would like to thank WSDOT for their engagement and assistance during our time of need. We also thank our customers for their collaboration and support.

A reminder that per Announcement 202006 dated September 21, 2020, Spangle to Rosalia is still shut down for bridge replacements through Friday October 30, 2020.



Regards,

Frank Forlini

Marketing & Sales

Spokane, Spangle & Palouse Railway

402-932-6380 W | 402-521-0485